

*Submersible sewage pumps made of cast iron, suitable for sewage and dirty water systems with solids, waste water, removal of treated liquid waste and tank emptying and general dirty water duties. (Kit discharge connector on request)*



### **SPECIFICATIONS**

- Maximum water temperature: 40°C
- Maximum passage of solids: 76 mm

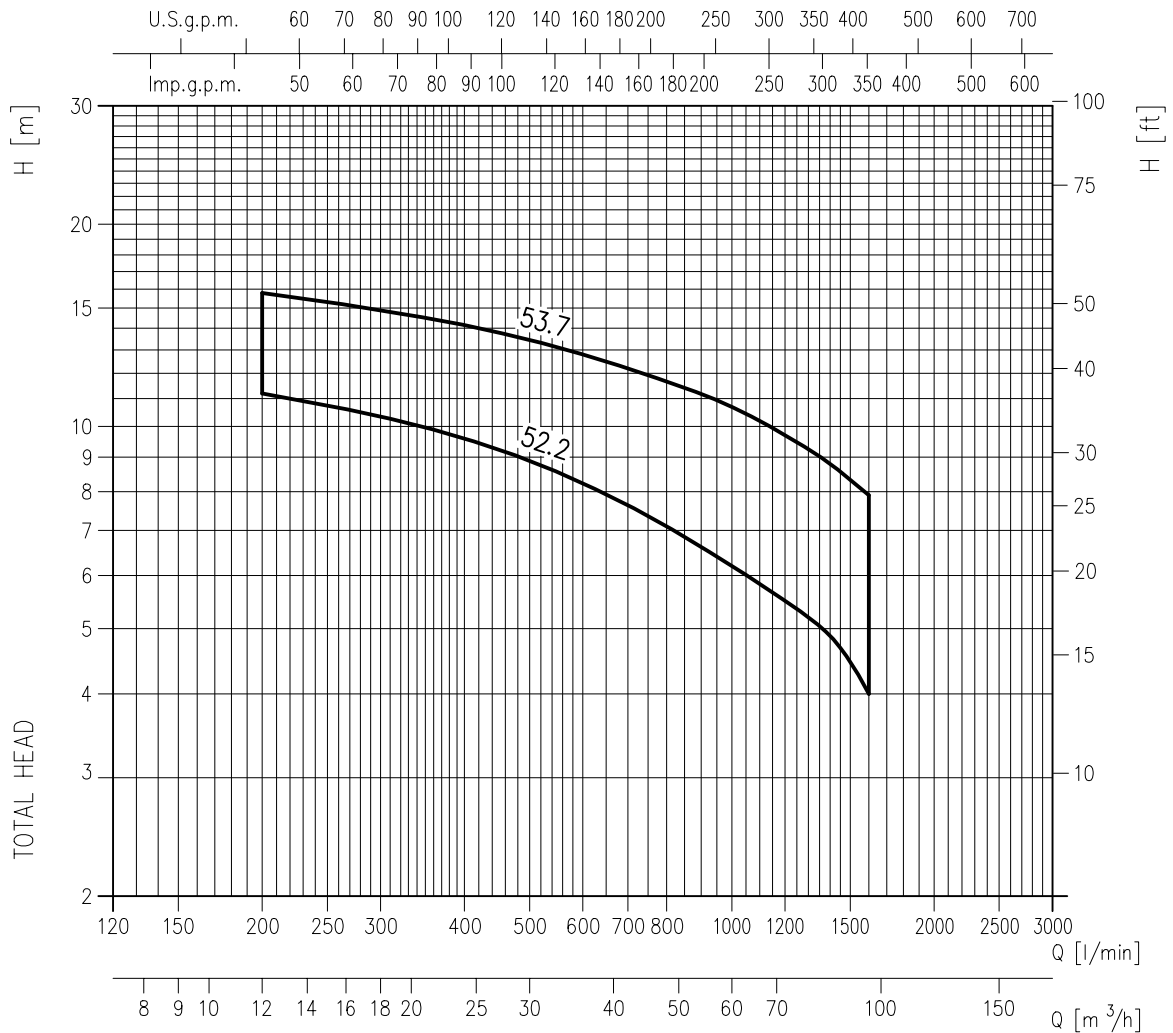
### **MATERIALS**

- Pump casing, impeller and elbow: cast iron
- Shaft in AISI 403
- Mechanical seal:
  - SiC/SiC/NBR (pump side)
  - Carbon/Ceramic/NBR (motor side)

### **TECHNICAL DATA**

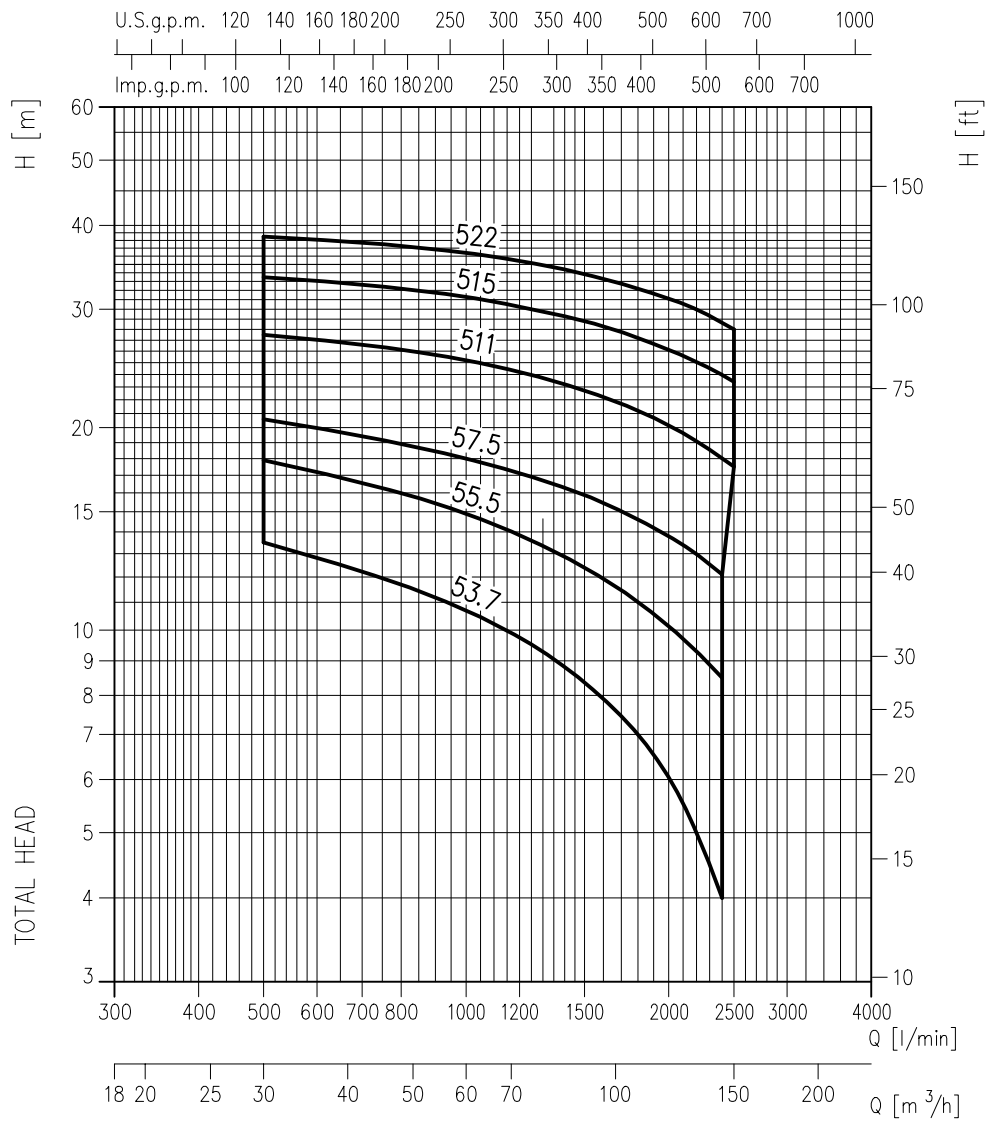
- 4 poles motor
- Insulation class F
- protection degree IP68
- 3~ 400V, 50 Hz
- DN80, DN100, DN150 flanges
- Power up to 22 kW

## PERFORMANCE CURVES 80DML (according to ISO 9906 Annex A)



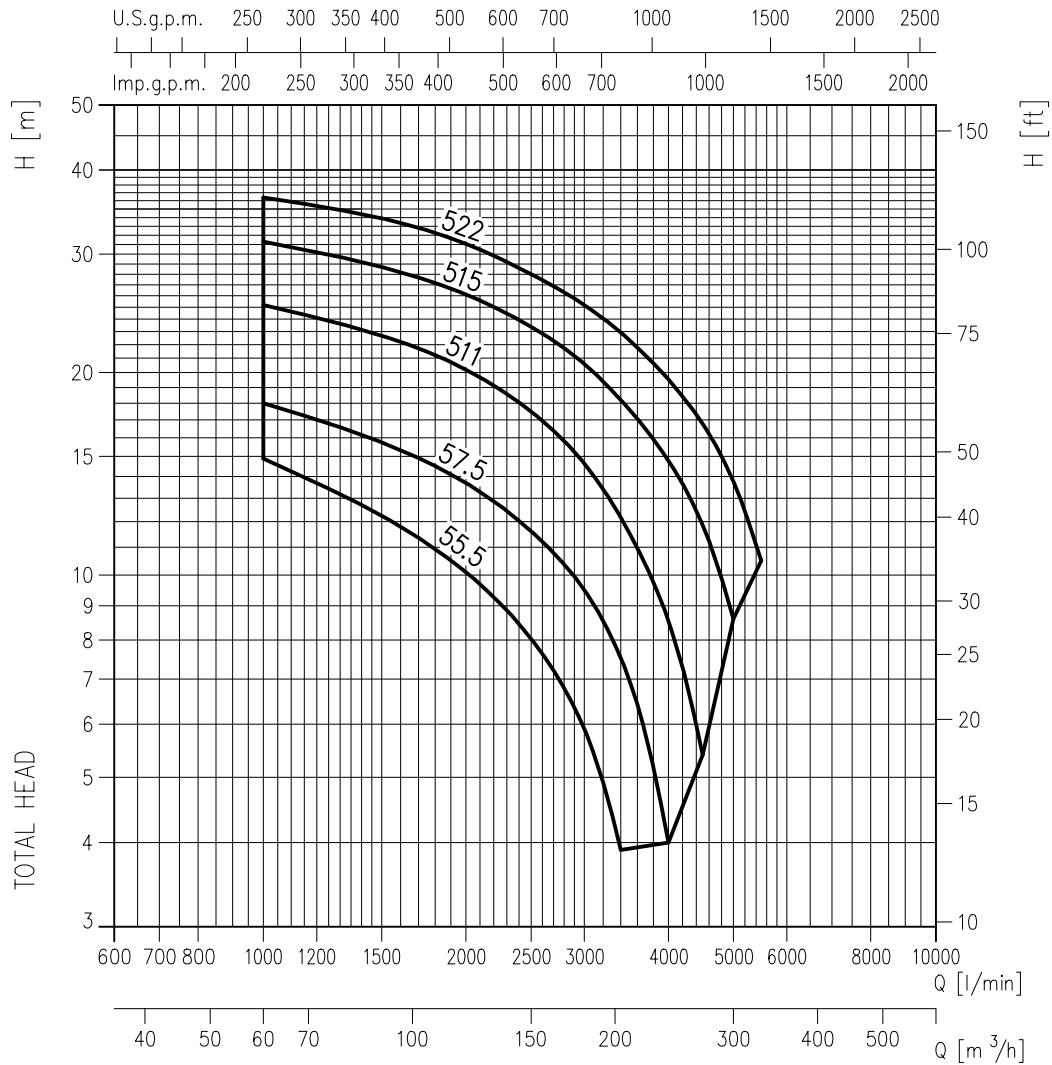
| Pump type<br>DML | kW  | HP | Q=Capacity       |      |      |      |      |      |      |      |      |      |
|------------------|-----|----|------------------|------|------|------|------|------|------|------|------|------|
|                  |     |    | l/min<br>m³/h    | 0    | 200  | 400  | 600  | 800  | 1000 | 1200 | 1400 | 1600 |
|                  |     |    | H=total head [m] |      |      |      |      |      |      |      |      |      |
| 80DML52.2        | 2.2 | 3  | 13.1             | 11.2 | 9.6  | 8.2  | 7.1  | 6.2  | 5.5  | 4.9  | 4    |      |
| 80DML53.7        | 3.7 | 5  | 17.9             | 15.8 | 14.2 | 12.8 | 11.7 | 10.7 | 9.7  | 8.8  | 7.9  |      |

## PERFORMANCE CURVES 100DML (according to ISO 9906 Annex A)



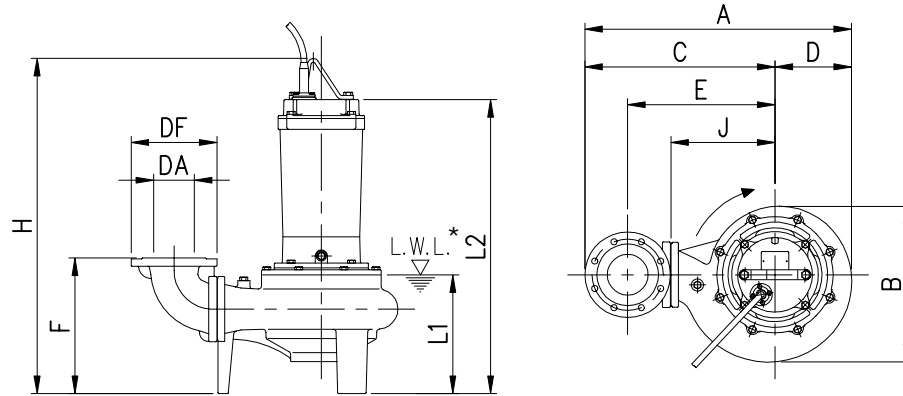
| Pump type<br>DML | kW  | HP  | Q=Capacity                 |      |      |      |      |      |      |      |      |      |
|------------------|-----|-----|----------------------------|------|------|------|------|------|------|------|------|------|
|                  |     |     | l/min<br>m <sup>3</sup> /h | 0    | 500  | 1000 | 1300 | 1600 | 1900 | 2200 | 2400 | 2500 |
|                  |     |     | H=total head [m]           |      |      |      |      |      |      |      |      |      |
| 100DML53.7       | 3.7 | 5   | 17.9                       | 13.5 | 10.7 | 9.3  | 7.9  | 6.5  | 5    | 4    | -    |      |
| 100DML55.5       | 5.5 | 7.5 | 22                         | 17.9 | 14.9 | 13.4 | 11.9 | 10.6 | 9.3  | 8.5  | -    |      |
| 100DML57.5       | 7.5 | 10  | 25.3                       | 20.6 | 18   | 16.7 | 15.5 | 14.2 | 13   | 12.1 | -    |      |
| 100DML511        | 11  | 15  | 30.3                       | 27.5 | 25.2 | 23.7 | 22.2 | 20.7 | 19.1 | 18   | 17.5 |      |
| 100DML515        | 15  | 20  | 35                         | 33.5 | 31.3 | 29.8 | 28.3 | 26.7 | 25.1 | 24   | 23.4 |      |
| 100DML522        | 22  | 30  | 40                         | 38.5 | 36.4 | 34.9 | 33.3 | 31.7 | 30   | 28.7 | 28   |      |

**PERFORMANCE CURVES 150DML** (according to ISO 9906 Annex A)

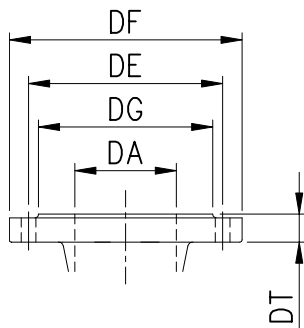


| Pump type<br>DML | kW  | HP  | Q=Capacity       |      |      |      |      |      |      |      |      |      |      |
|------------------|-----|-----|------------------|------|------|------|------|------|------|------|------|------|------|
|                  |     |     | l/min<br>m³/h    | 0    | 1000 | 2000 | 2500 | 3000 | 3400 | 4000 | 4500 | 5000 | 5500 |
|                  |     |     | H=Total head [m] |      |      |      |      |      |      |      |      |      |      |
| 150DML55.5       | 5.5 | 7.5 | 22               | 14.9 | 10.1 | 8    | 5.9  | 3.9  | -    | -    | -    | -    |      |
| 150DML57.5       | 7.5 | 10  | 25.3             | 18   | 13.7 | 11.6 | 9.5  | 7.5  | 4    | -    | -    | -    |      |
| 150DML511        | 11  | 15  | 30.3             | 25.2 | 20.2 | 17.5 | 14.7 | 12.2 | 8.6  | 5.4  | -    | -    |      |
| 150DML515        | 15  | 20  | 35               | 31.3 | 26.1 | 23.4 | 20.6 | 18.2 | 14.8 | 11.9 | 8.6  | -    |      |
| 150DML522        | 22  | 30  | 40               | 36.4 | 31.1 | 28   | 25.2 | 22.9 | 19.5 | 16.8 | 13.8 | 10.5 |      |

## DIMENSIONS



\* L.W.L. = Low water level



### FLANGES

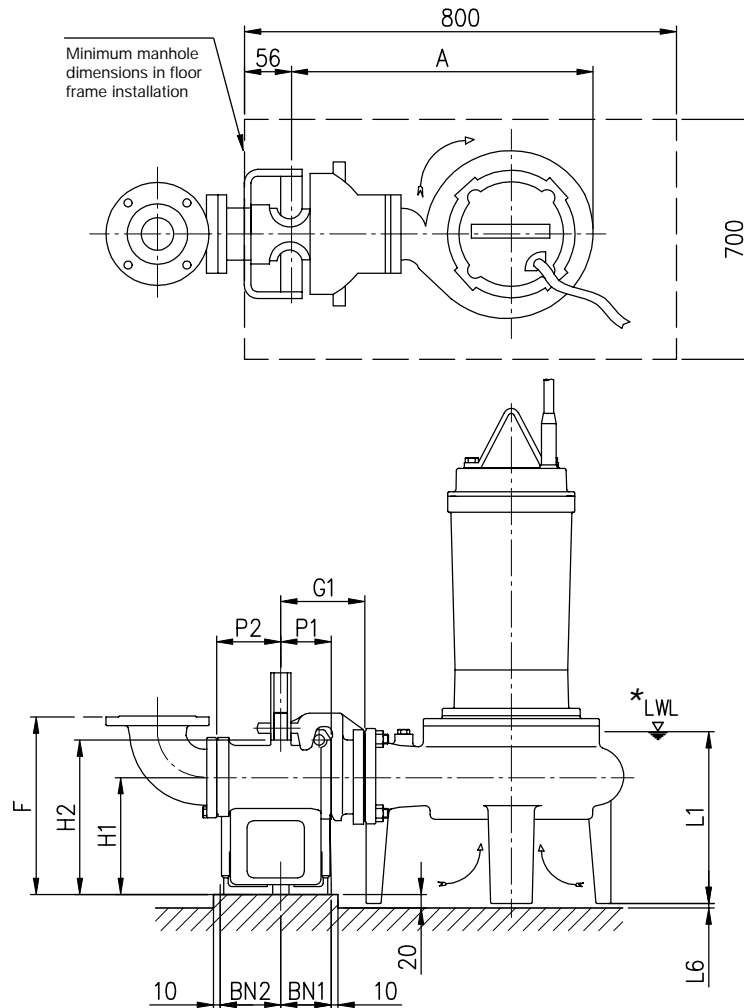
| DA  | DG  | DE  | DF  | DT |
|-----|-----|-----|-----|----|
| 80  | 138 | 160 | 200 | 22 |
| 100 | 158 | 180 | 220 | 24 |
| 150 | 212 | 240 | 285 | 26 |

### DIMENSIONAL TABLE

| Pump type<br>DML | Dimensions |     |       |     |       |     |     |     |      |     |     |     | Weight<br>kg |
|------------------|------------|-----|-------|-----|-------|-----|-----|-----|------|-----|-----|-----|--------------|
|                  | DA         | kW  | A     | B   | C     | D   | E   | F   | H    | J   | L1  | L2  |              |
| 80DML52.5        | 80         | 2.2 | 542   | 320 | 385   | 157 | 285 | 308 | 668  | 210 | 279 | 547 | 80           |
| 80DML53.7        | 80         | 3.7 | 542   | 320 | 385   | 157 | 285 | 308 | 727  | 210 | 279 | 627 | 87           |
| 100DML53.7       | 100        | 3.7 | 582   | 320 | 425   | 157 | 315 | 313 | 727  | 210 | 279 | 627 | 89           |
| 100DML55.5       | 100        | 5.5 | 658   | 381 | 470   | 188 | 360 | 339 | 824  | 255 | 310 | 724 | 121          |
| 100DML57.5       | 100        | 7.5 | 658   | 381 | 470   | 188 | 360 | 339 | 824  | 255 | 310 | 724 | 125          |
| 100DML511        | 100        | 11  | 751   | 455 | 530   | 221 | 420 | 355 | 938  | 315 | 329 | 778 | 160          |
| 100DML515        | 100        | 15  | 751   | 455 | 530   | 221 | 420 | 355 | 938  | 315 | 329 | 778 | 166          |
| 100DML522        | 100        | 22  | 795   | 497 | 550   | 245 | 440 | 358 | 1021 | 335 | 342 | 841 | 226          |
| 150DML55.5       | 150        | 5.5 | 715.5 | 381 | 527.5 | 188 | 385 | 369 | 824  | 255 | 310 | 724 | 127          |
| 150DML57.5       | 150        | 7.5 | 715.5 | 381 | 527.5 | 188 | 385 | 369 | 824  | 255 | 310 | 724 | 132          |
| 150DML511        | 150        | 11  | 808.5 | 455 | 587.5 | 221 | 445 | 385 | 938  | 315 | 329 | 778 | 166          |
| 150DML515        | 150        | 15  | 808.5 | 455 | 587.5 | 221 | 445 | 385 | 938  | 315 | 329 | 778 | 172          |
| 150DML522        | 150        | 22  | 852.5 | 497 | 607.5 | 245 | 465 | 388 | 1021 | 335 | 342 | 841 | 232          |

## KIT DISCHARGE CONNECTOR DIMENSIONS LM80

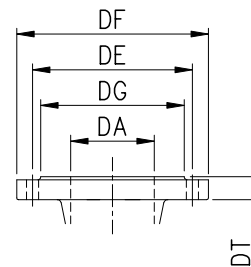
80 (100) DML 52.2, 53.7



\* LWL = Low water level

### FLANGES

| DA  | DG  | DE  | DF  | DT |
|-----|-----|-----|-----|----|
| 80  | 138 | 160 | 200 | 22 |
| 100 | 158 | 180 | 220 | 24 |

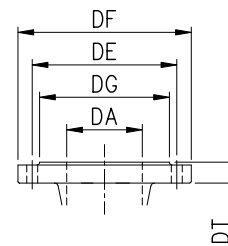
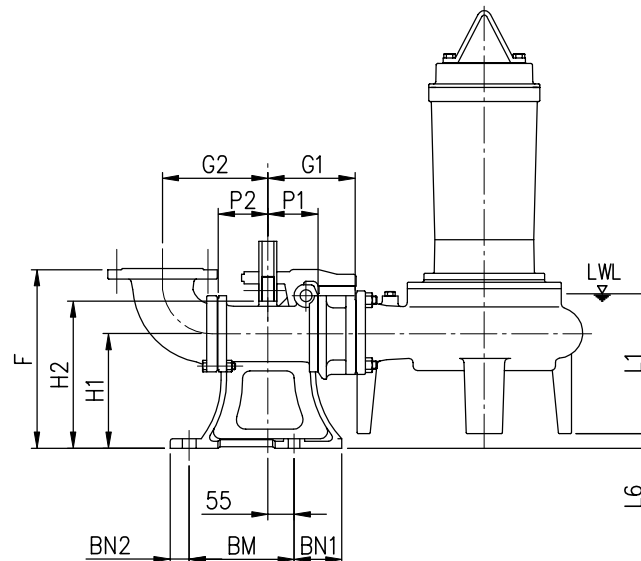
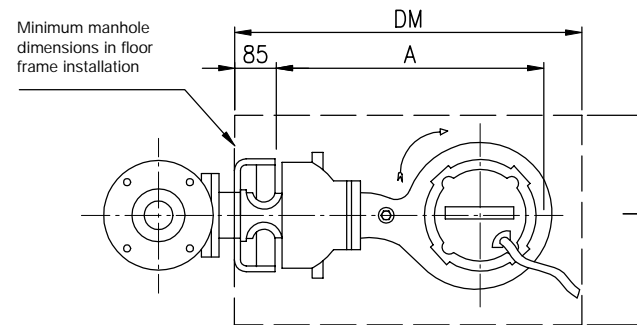


### DIMENSIONAL TABLE

| Pump type<br>DML | Dimensions |    |    |     |     |     |     |     |     |    |     |     |    |     | Kit discharge<br>connector | Weight<br>kg |
|------------------|------------|----|----|-----|-----|-----|-----|-----|-----|----|-----|-----|----|-----|----------------------------|--------------|
|                  | A          | P1 | P2 | G1  | G2  | F   | H1  | H2  | L1  | L6 | BN1 | BN2 | D1 | E1  |                            |              |
| 80DML52.2        | 492        | 75 | 90 | 125 | 165 | 295 | 175 | 230 | 279 | 7  | 75  | 90  | 15 | 155 | LM80                       | 17           |
| 80DML53.7        | 492        | 75 | 90 | 125 | 165 | 295 | 175 | 230 | 279 | 7  | 75  | 90  | 15 | 155 | LM80                       | 17           |
| 100DML53.7       | 492        | 75 | 90 | 125 | 195 | 300 | 175 | 230 | 279 | 7  | 75  | 90  | 15 | 155 | LM80                       | 17           |

## KIT DISCHARGE CONNECTOR DIMENSIONS LL100

100 (150) DML



### FLANGES

| DA  | DG  | DE  | DF  | DT |
|-----|-----|-----|-----|----|
| 100 | 158 | 180 | 220 | 24 |
| 150 | 212 | 240 | 285 | 26 |

### DIMENSIONAL TABLE

| Pump type<br>DML | Dimensions |     |     |     |     |     |     |     |     |    |     |     |     |      |     |    |     | Kit discharge<br>connector | Weight<br>kg |
|------------------|------------|-----|-----|-----|-----|-----|-----|-----|-----|----|-----|-----|-----|------|-----|----|-----|----------------------------|--------------|
|                  | A          | P1  | P2  | G1  | G2  | F   | H1  | H2  | L1  | L6 | BN1 | BN2 | BM  | DM   | I   | D1 | E1  |                            |              |
| 100DML55.5       | 628        | 105 | 105 | 185 | 210 | 370 | 240 | 265 | 310 | 31 | 100 | 40  | 220 | 800  | 700 | 19 | 175 | LL100                      | 46           |
| 100DML57.5       | 628        | 105 | 105 | 185 | 210 | 370 | 240 | 265 | 310 | 31 | 100 | 40  | 220 | 800  | 700 | 19 | 175 | LL100                      | 46           |
| 100DML511        | 721        | 105 | 105 | 185 | 210 | 370 | 240 | 265 | 329 | 15 | 100 | 40  | 220 | 1000 | 700 | 19 | 175 | LL100                      | 46           |
| 100DML515        | 721        | 105 | 105 | 185 | 210 | 370 | 240 | 265 | 329 | 15 | 100 | 40  | 220 | 1000 | 700 | 19 | 175 | LL100                      | 46           |
| 100DML522        | 765        | 105 | 105 | 185 | 210 | 370 | 240 | 265 | 342 | 12 | 100 | 40  | 220 | 1000 | 700 | 19 | 175 | LL100                      | 46           |
| 150DML55.5       | 628        | 105 | 105 | 185 | 235 | 400 | 240 | 265 | 310 | 31 | 100 | 40  | 220 | 800  | 700 | 19 | 175 | LL100                      | 46           |
| 150DML57.5       | 628        | 105 | 105 | 185 | 235 | 400 | 240 | 265 | 310 | 31 | 100 | 40  | 220 | 800  | 700 | 19 | 175 | LL100                      | 46           |
| 150DML511        | 721        | 105 | 105 | 185 | 235 | 400 | 240 | 265 | 329 | 15 | 100 | 40  | 220 | 1000 | 700 | 19 | 175 | LL100                      | 46           |
| 150DML515        | 721        | 105 | 105 | 185 | 235 | 400 | 240 | 265 | 329 | 15 | 100 | 40  | 220 | 1000 | 700 | 19 | 175 | LL100                      | 46           |
| 150DML522        | 765        | 105 | 105 | 185 | 235 | 400 | 240 | 265 | 342 | 12 | 100 | 40  | 220 | 1000 | 700 | 19 | 175 | LL100                      | 46           |